

# CAPACITY BUILDING



TRAINING



LEARN



KNOWLEDGE



SKILLS



COACHING



SUPPORT



DEVELOPMENT



European  
Commission

## Asian Regional Workshop

# Challenges in implementing CBHE projects in Asia

*Grant Holders Meeting CBHE 2021*

# Challenges in implementing CBHE projects in Asia



Photo: © Designed Freepik

## Challenges identified at selection stage

- Recurrent beneficiaries which leads to a **lack of innovative and creative** project ideas
- **Absence of Internationalization strategies** in HEIs and lack of long-term strategic vision
- **'Inflated' and not precise project budgets** with reduced cost/efficiency, i.e. high staff costs, very general list of equipment



# Challenges at Country/institutional level (I)

- **Difficulties in complying with CBHE rules** and requirements (bureaucracy and hierarchical structure of HEIs)
- **Delays** in the implementation due to **different regulations** of the Countries involved in **regional and cross-regional projects** (tendering procedures)
- **Specific national rules** and **regulations** delaying the implementation capacity of some partners

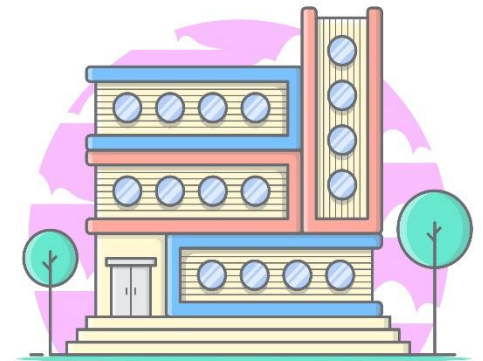


Image © iStockphoto.com

## Challenges at Country/institutional level (II)

- In some Asian Countries, **limited previous direct experience** in managing EU funded projects
- **Limited “critical mass”** of projects in some Countries and **difficulty of networking** with other CBHE projects
- Perception at HEI level of the project as **an unique activity**, not as part of the internationalization strategy of the HEI
- **Lack of Institutional endorsement** of each partner administration for synergies among different CBHE projects within the same institution.

## Challenges at project level (I)



- **Limited participation of non-academic partners** and difficulties in involving private business representatives
- **Problematic accreditation** for the newly developed study programmes within the eligibility period of the CBHE project
- **Insufficient involvement of students** in the project conception, design and implementation

## Challenges at project level (II)

- **Lack of quality standards** in management documents for quality assurance, management processes, promotion and disseminations (i.e. lack of indicators, milestones, responsibilities, and timeline)
- **Insufficient dissemination** of project outcomes and results
- The **sustainability** of project results is often **not sufficiently addressed** by the CBHE consortia

## Challenges at project level related to COVID-19 (III)

- **Difficulties in respecting the project timetable** due to COVID-19 and need to readapt some of the planned activities
- Risk to have **silent partners** due to the difficulty to travel
- **Difficulty** to build a **constructive and interactive team dynamic** due to the increasing number of online activities
- Risk to have a **reduced support** at **HEI level** when working on remote



# Possible solutions and recommendations

- **Networking**
- **Increased dialogue** within the **consortium** and within **each partner organization**
- **Synergies** with other **CBHE projects** in the same academic field
- **Increased focus** on **management needs and activities**
- **Dialogue** with your project officer at **EACEA**



Image: © Carl Minary / Pixabay

## Useful links (I)

➤ **CBHE Regional reports (Impact studies):**

[https://eacea.ec.europa.eu/sites/resources/capacity-building-in-higher-education-cbhe-action\\_en](https://eacea.ec.europa.eu/sites/resources/capacity-building-in-higher-education-cbhe-action_en)

➤ **CBHE Regional Factsheets:**

[https://eacea.ec.europa.eu/sites/resources/regional-factsheets-capacity-building-in-field-higher-education\\_en](https://eacea.ec.europa.eu/sites/resources/regional-factsheets-capacity-building-in-field-higher-education_en)

➤ **CBHE Statistics:**

[https://eacea.ec.europa.eu/sites/resources/statistics-for-capacity-building-in-field-higher-education-selection-call-eaca022019\\_en](https://eacea.ec.europa.eu/sites/resources/statistics-for-capacity-building-in-field-higher-education-selection-call-eaca022019_en)

## Useful links (II)

➤ **CBHE projects Master table:**

[https://eacea.ec.europa.eu/erasmus-plus/library/information-capacity-building-projects-in-field-higher-education\\_en](https://eacea.ec.europa.eu/erasmus-plus/library/information-capacity-building-projects-in-field-higher-education_en)

➤ **CBHE selected projects:**

[https://eacea.ec.europa.eu/erasmus-plus/selection-results/capacity-building-in-field-higher-education-2020\\_en](https://eacea.ec.europa.eu/erasmus-plus/selection-results/capacity-building-in-field-higher-education-2020_en)

➤ **Beneficiaries space 2020:**

[https://eacea.ec.europa.eu/erasmus-plus/beneficiaries-space\\_en](https://eacea.ec.europa.eu/erasmus-plus/beneficiaries-space_en)



© European Union 2020

Unless otherwise noted the reuse of this presentation is authorised under the [CC BY 4.0](https://creativecommons.org/licenses/by/4.0/) license. For any use or reproduction of elements that are not owned by the EU, permission may need to be sought directly from the respective right holders.

Slide xx: element concerned, source: e.g. Fotolia.com; Slide xx: element concerned, source: e.g. iStock.com

