

CAPACITY BUILDING



TRAINING



LEARN



KNOWLEDGE



SKILLS



COACHING



SUPPORT



DEVELOPMENT

European Commission
Education, Audiovisual & Culture
Executive Agency



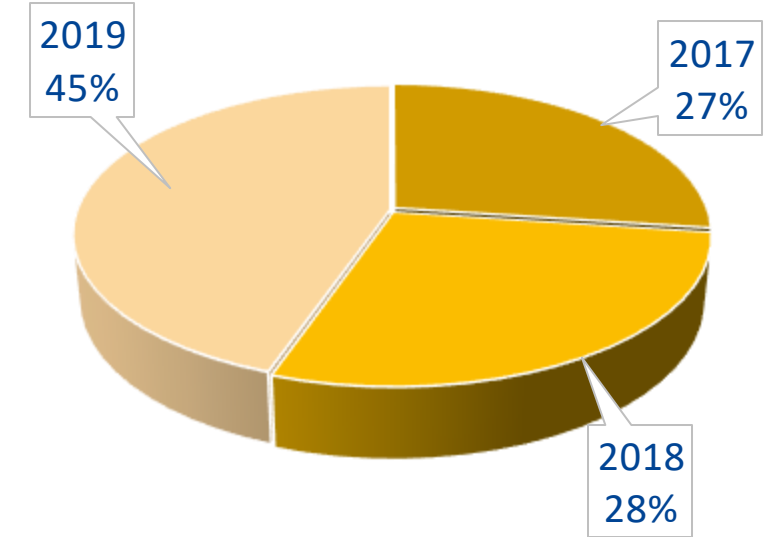
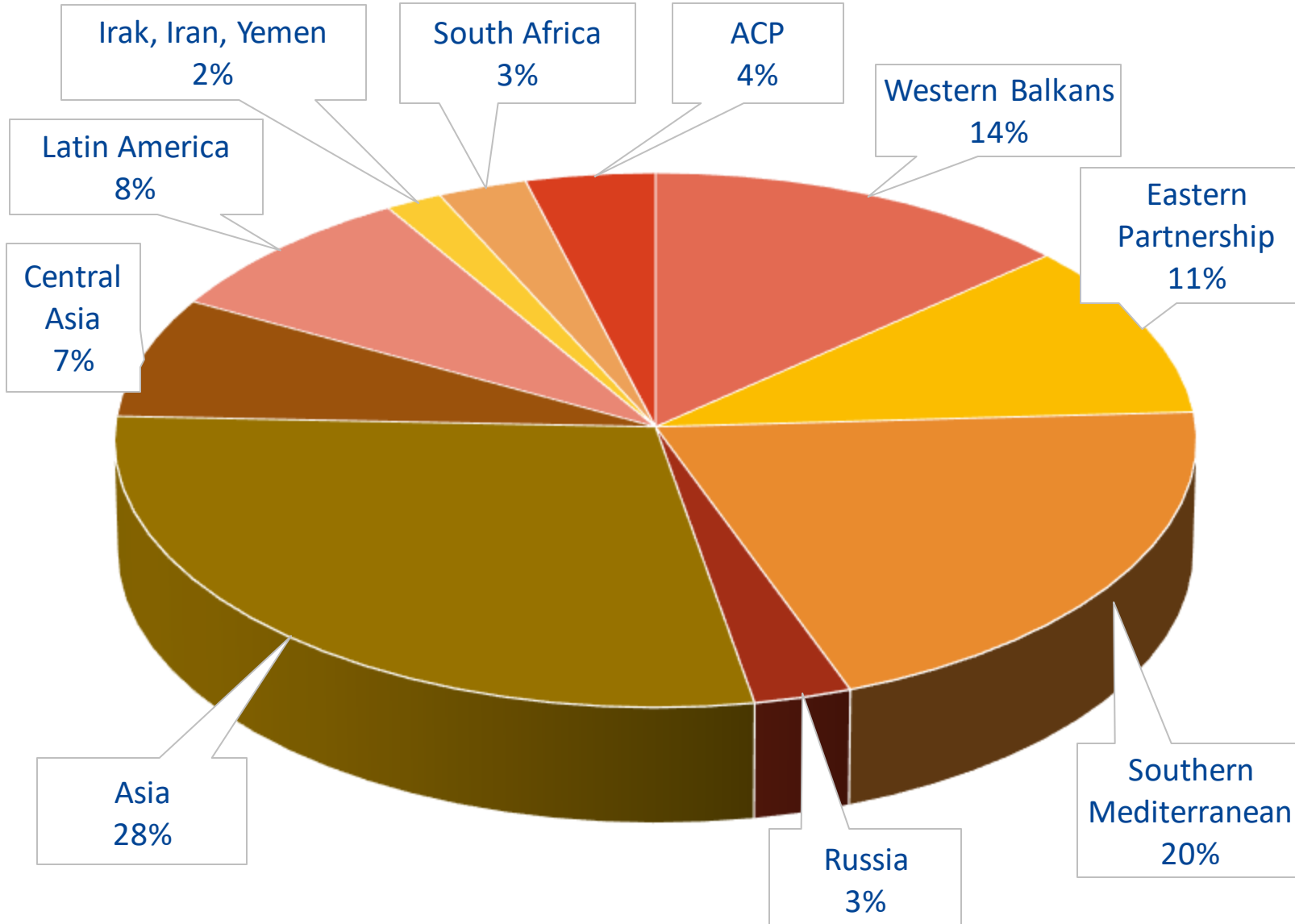
European
Commission

Survey on the impact of COVID-19 on the implementation of CBHE projects

Paivi **HERNESNIEMI** and Eva **VALLE CASANOVA** (EACEA)

Grant Holders Meeting CBHE 2021

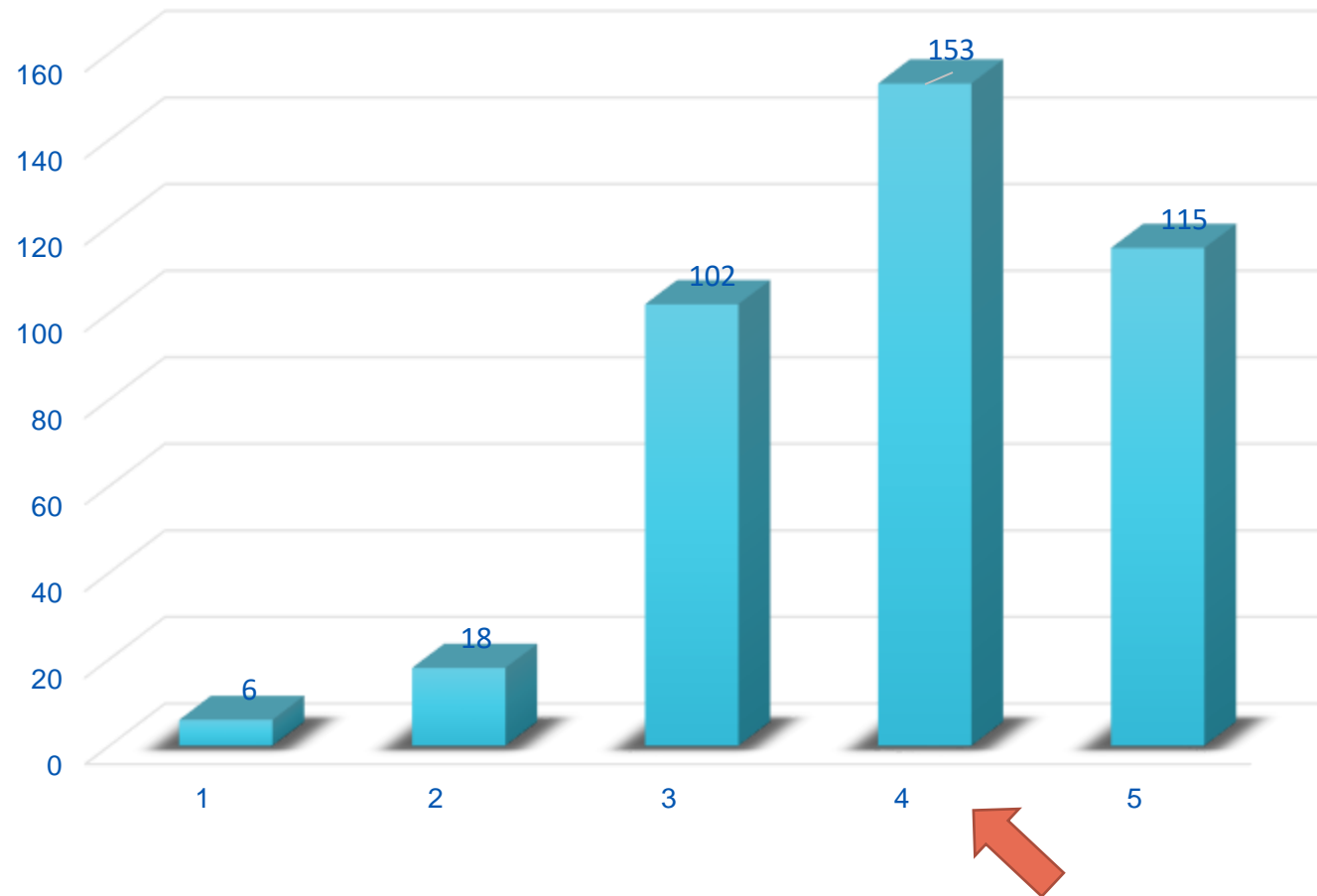
Participation in the survey: Regions and contracting years



Impact on the implementation of the project

Impact of COVID on the implementation of the project

(1 low impact to 5 very high impact)

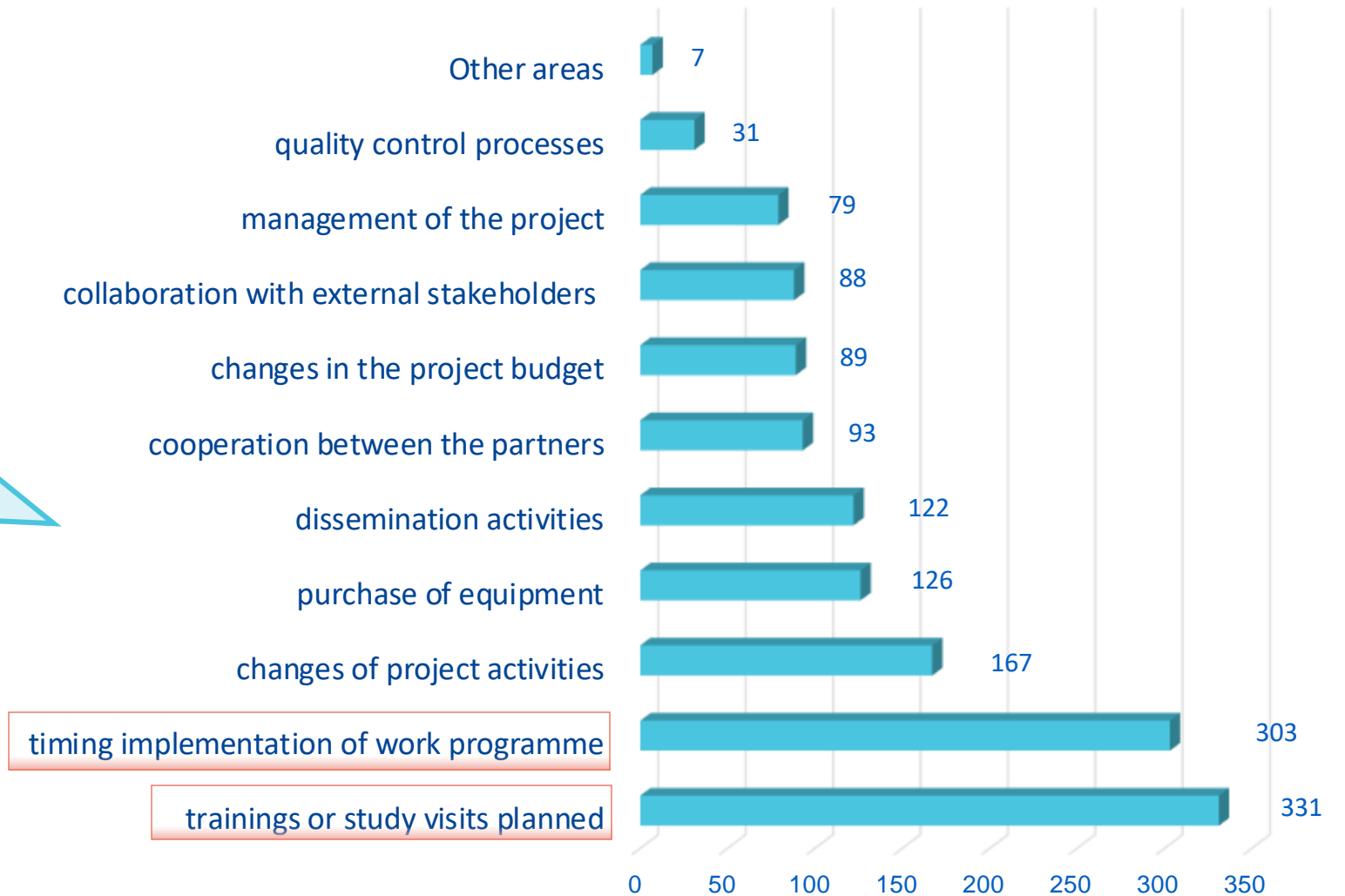


Among the participants, 68% answered that COVID had an **high impact** on the implementation of the project.

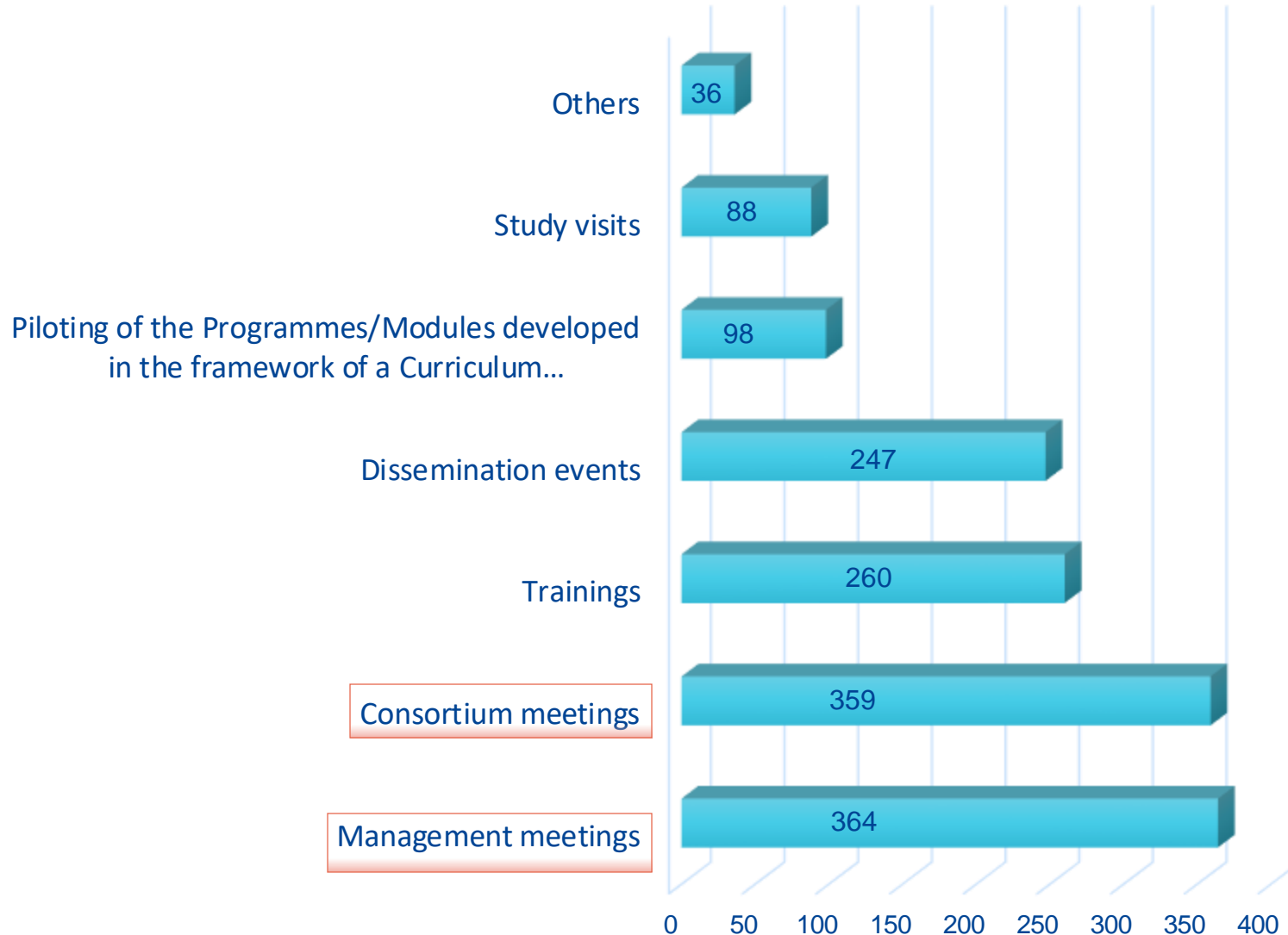


In which areas has the impact been the highest?

“Study visits which are very important for the learning process of our HEIs are very difficult to implement on-line.”



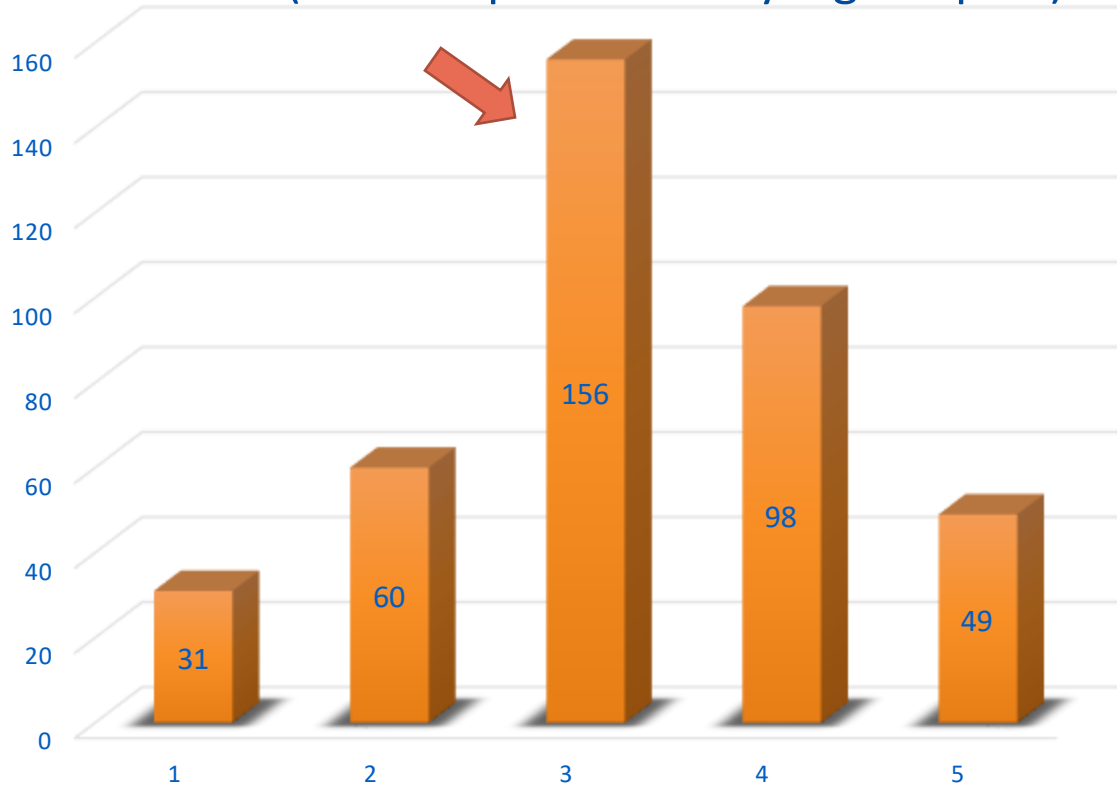
Planned activities converted into online activities



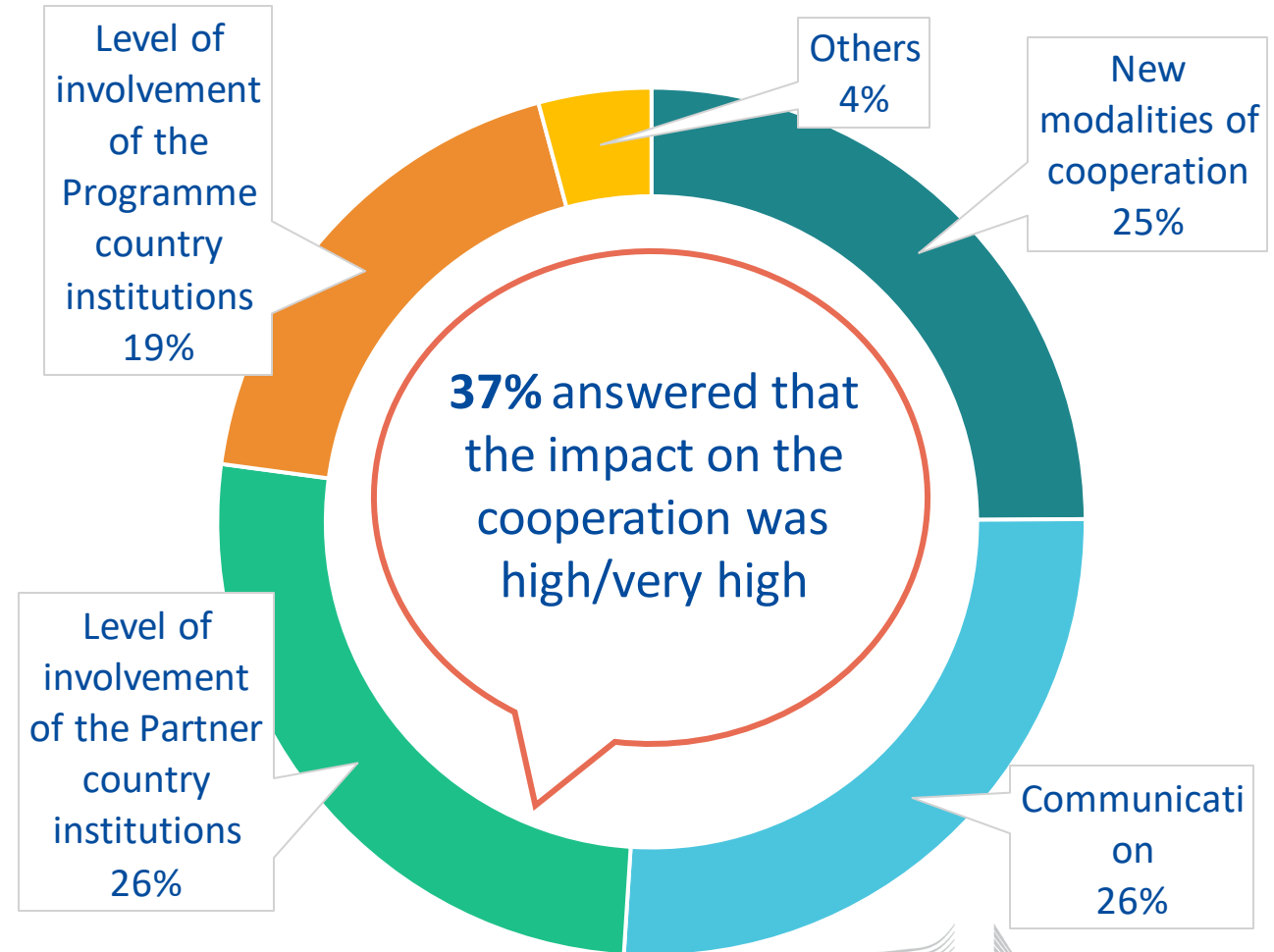
“We are actively working to convert some of the Laboratory onsite activities into remote.”
(Latin America)

Impact on the cooperation between the project partners

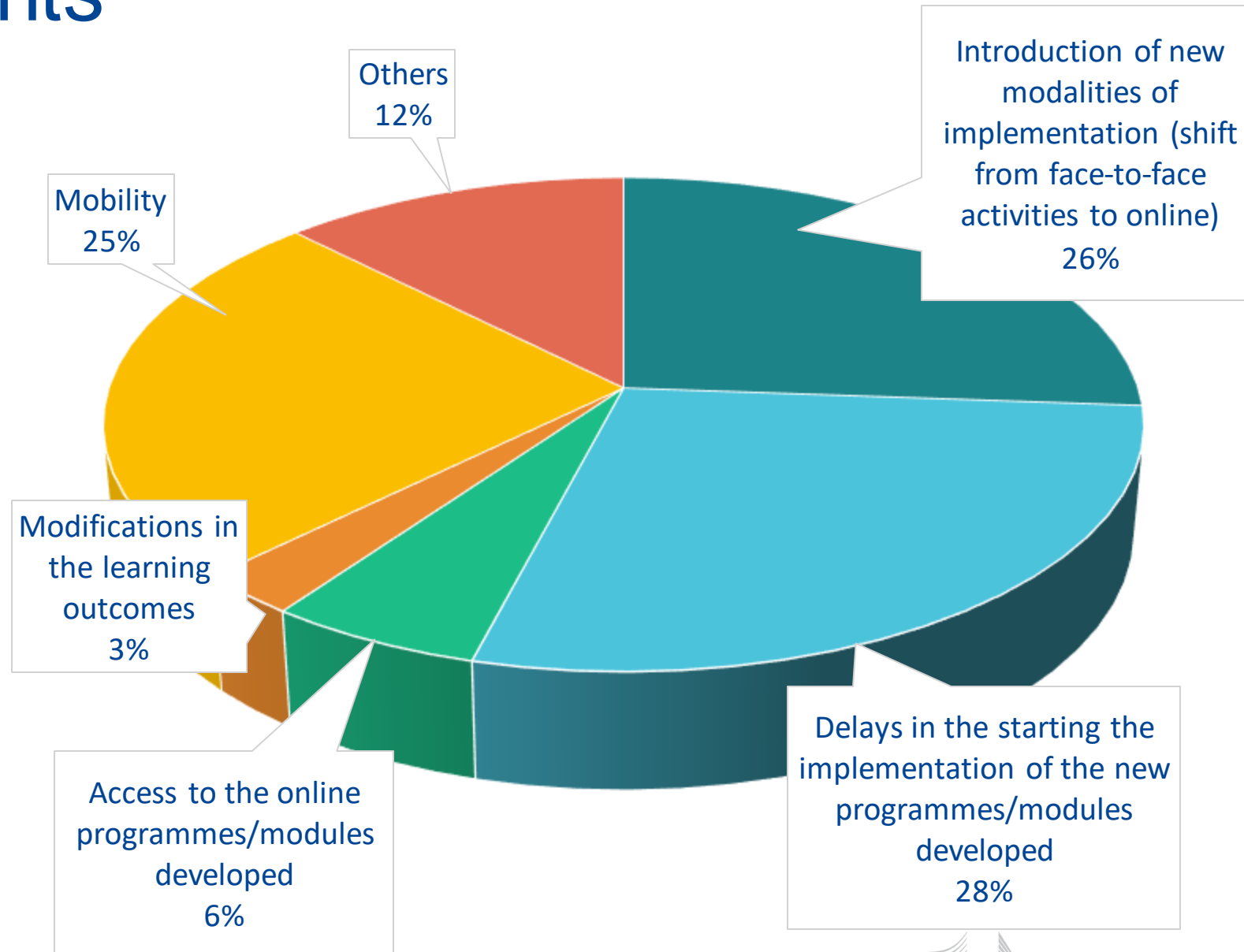
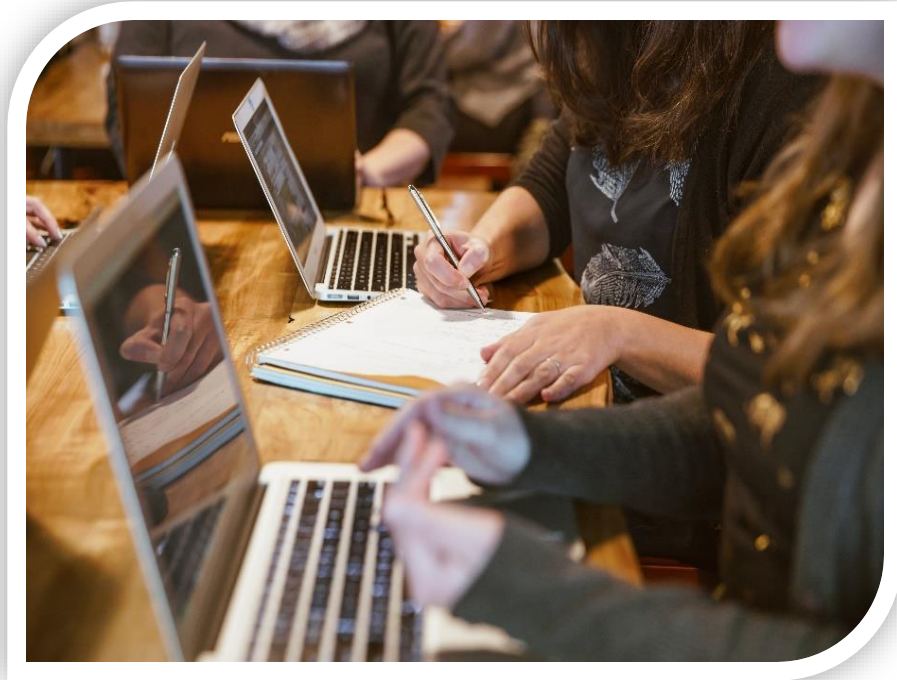
Impact on the cooperation between the project partners
(1 low impact to 5 very high impact)



In which areas has the cooperation between the project partners been mostly affected?

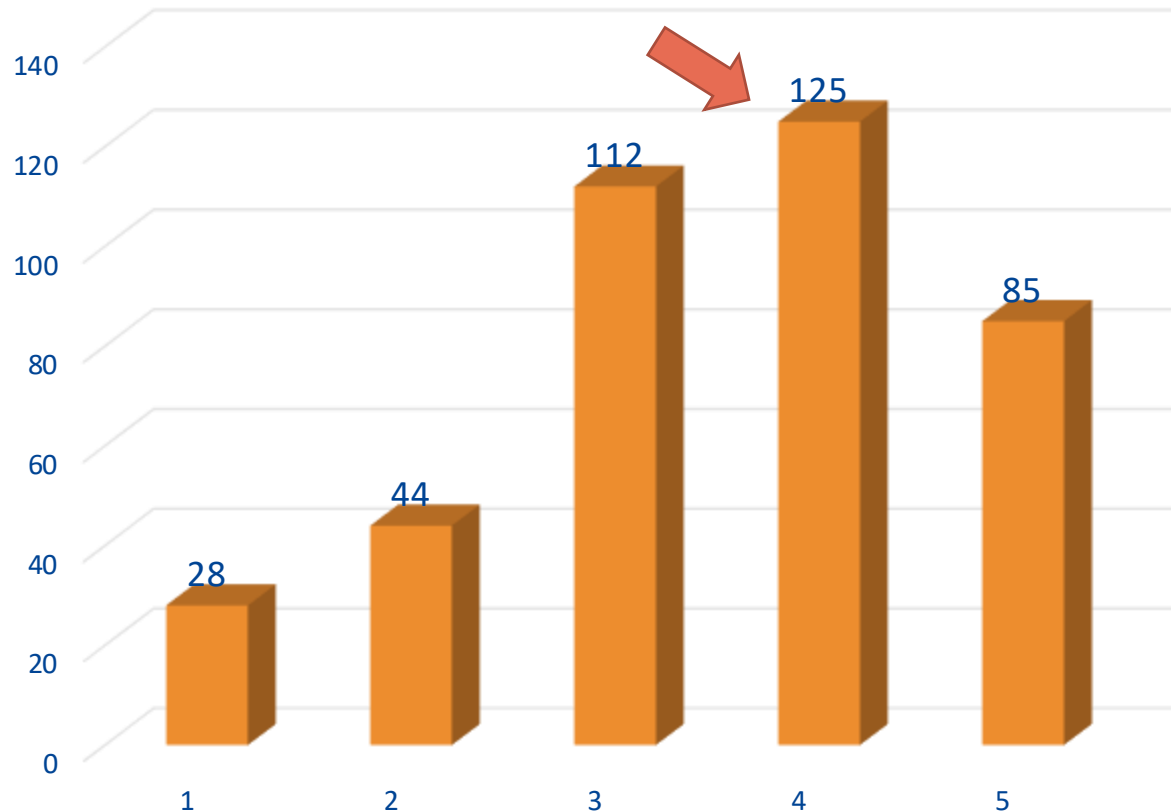


Impact on students

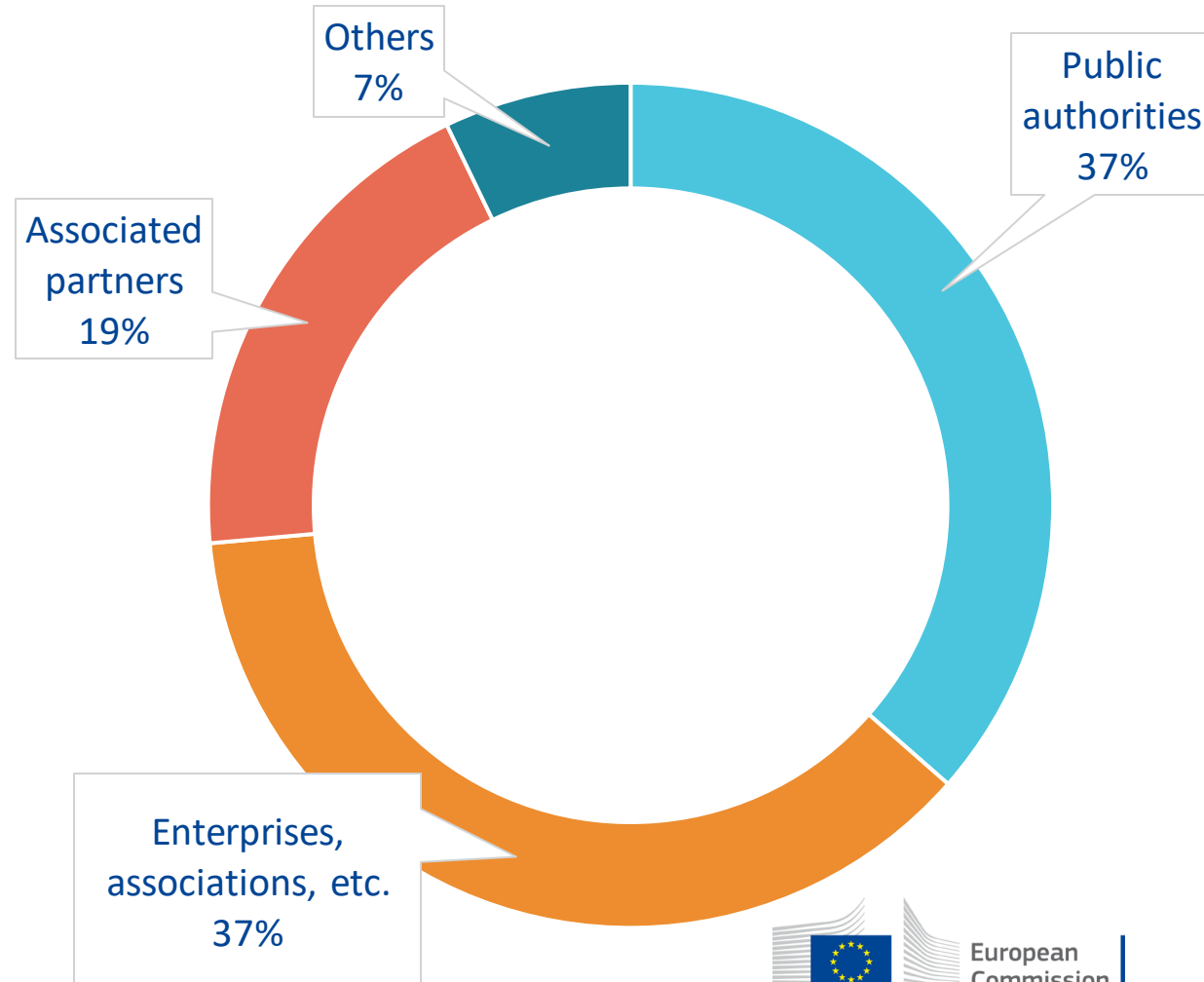


Impact in the collaboration with external stakeholders

To which extent has the collaboration with external stakeholders been affected?
(1 low impact to 5 very high impact)



With which external stakeholders the collaboration has been mostly affected?



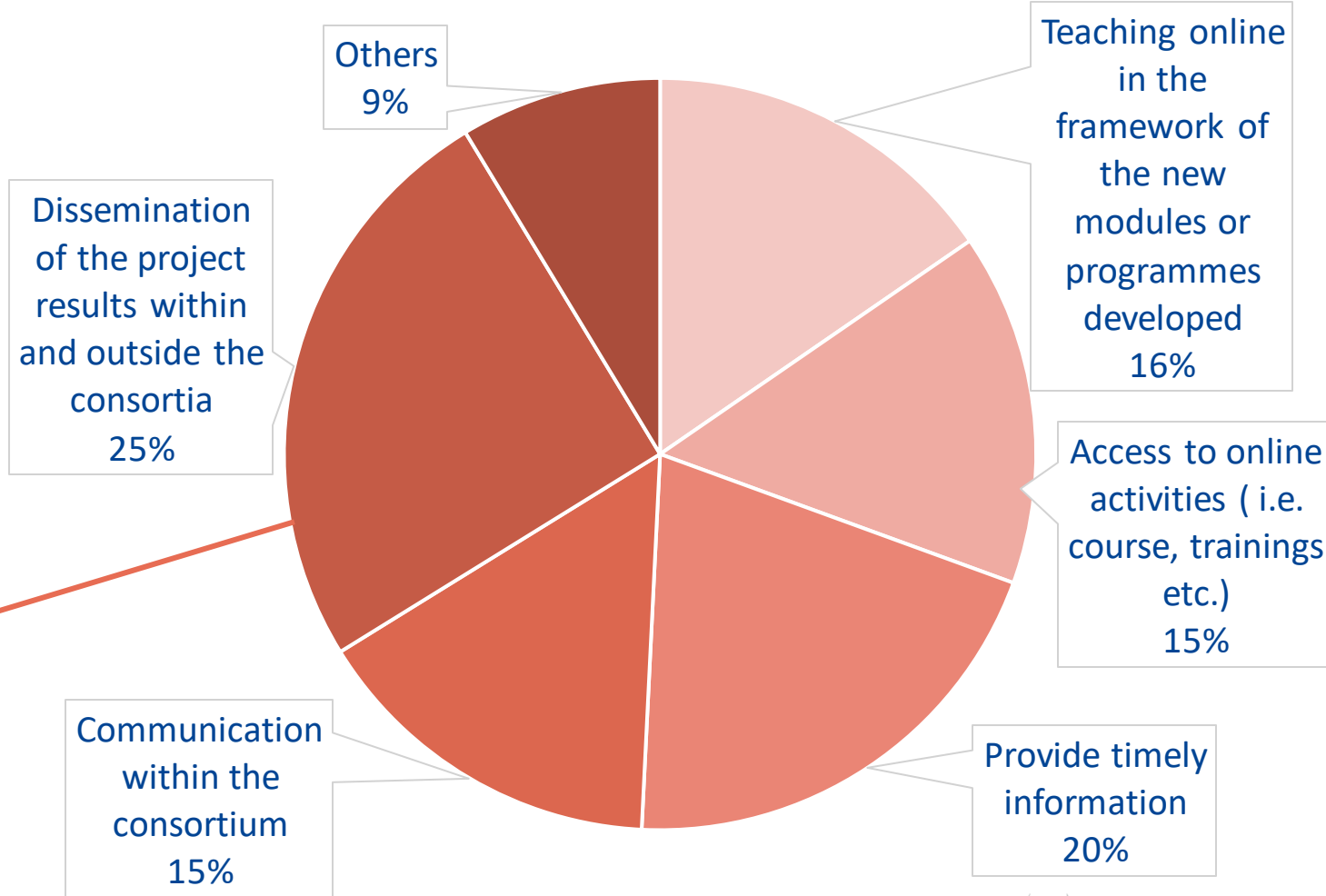
Difficulties and challenges in the Partner Countries

In which areas have the project partners from the Partner countries faced the biggest difficulties?

“The cooperation among the whole project partnership has been affected in different areas because of the combination of the health emergency and the specific conflict situation in the Partner Country.”

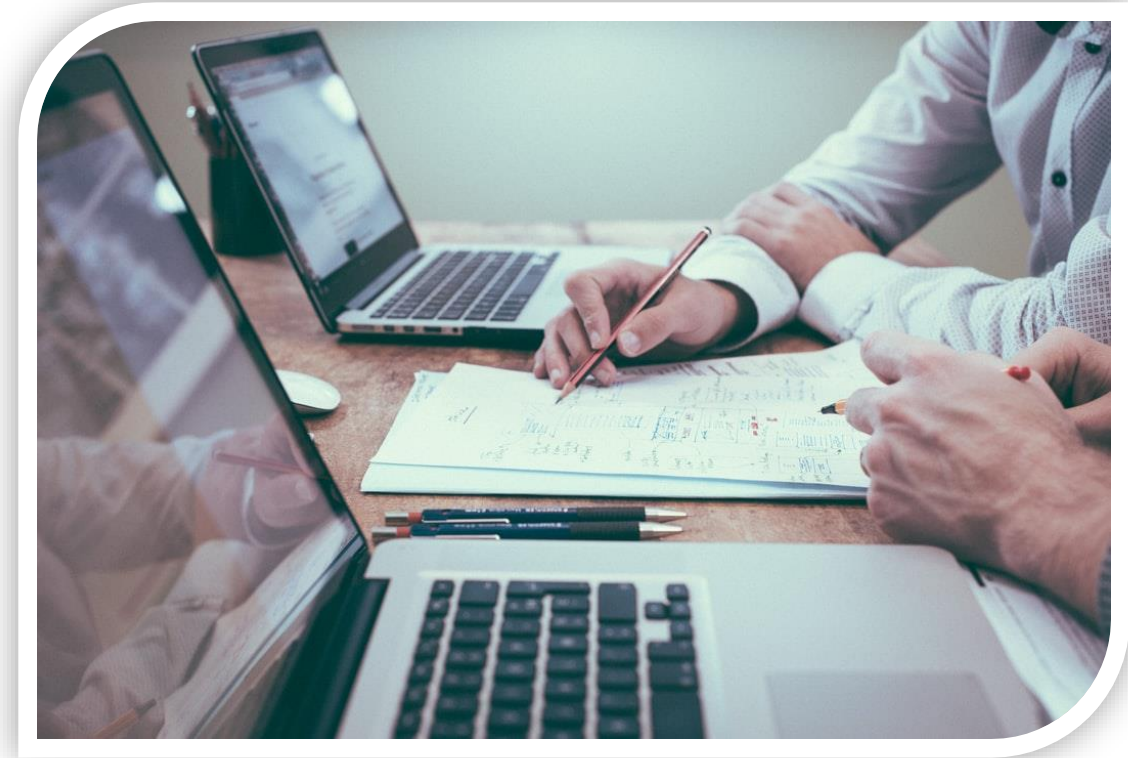
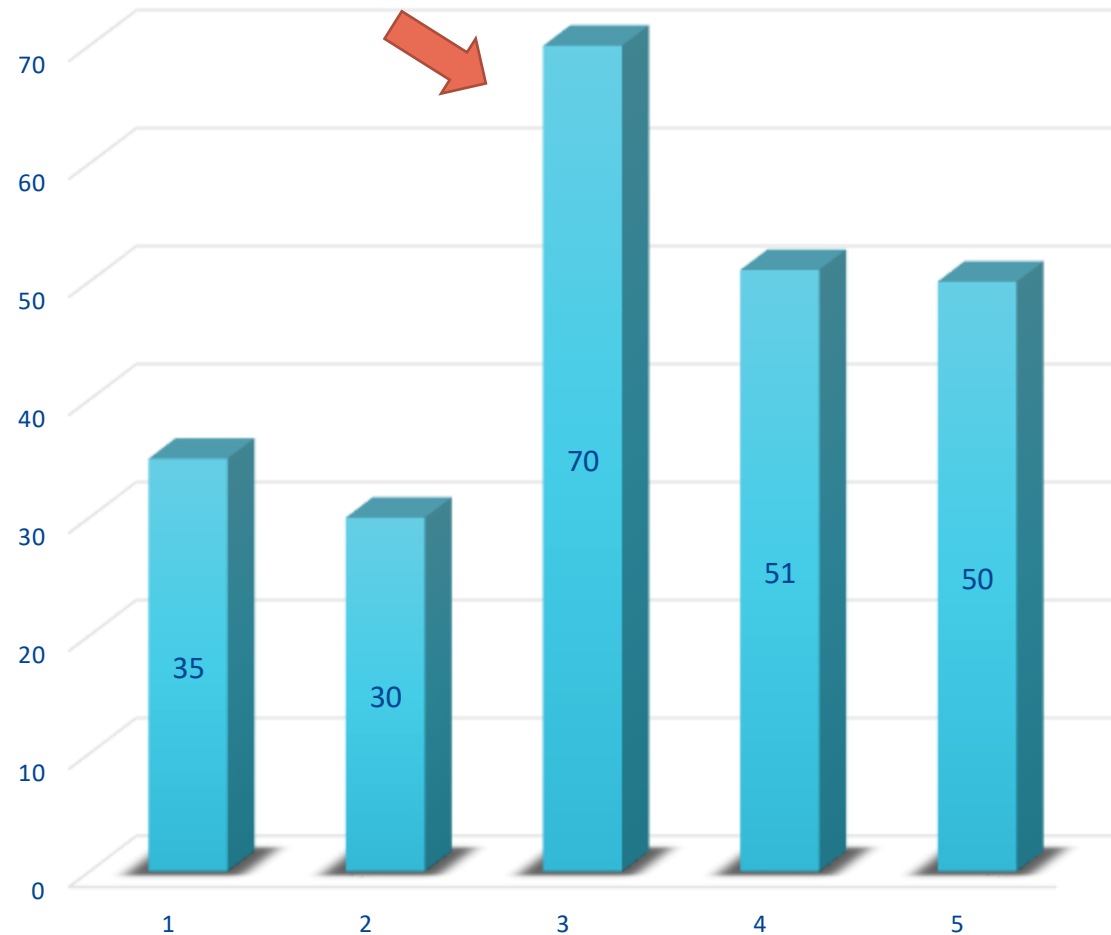
“The cancellation of mobility flows have limited the degree of involvement of external stakeholders.”

“Different lockdown periods affected the communication, but the partnership is more unified than ever against the common challenge of the pandemic.”



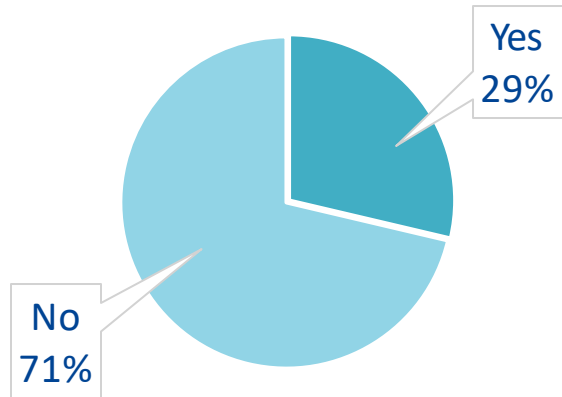
Impact on the accreditation

Impact on the accreditation of
the new programmes
(1 low impact to 5 very high impact)

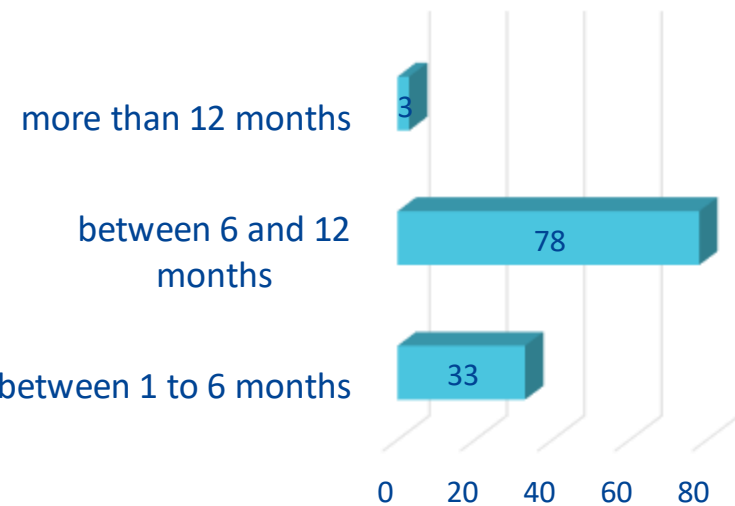


Modification of the eligibility period

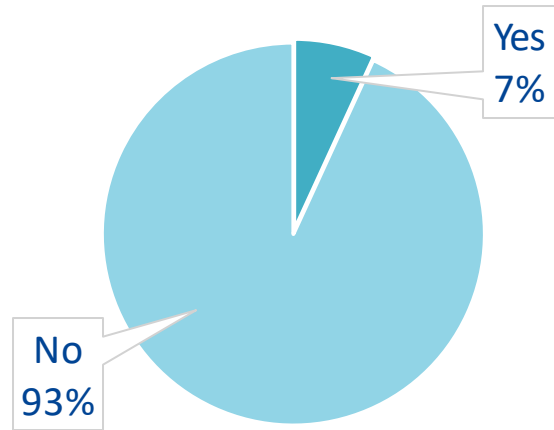
Has your project already received an extension due to Covid?



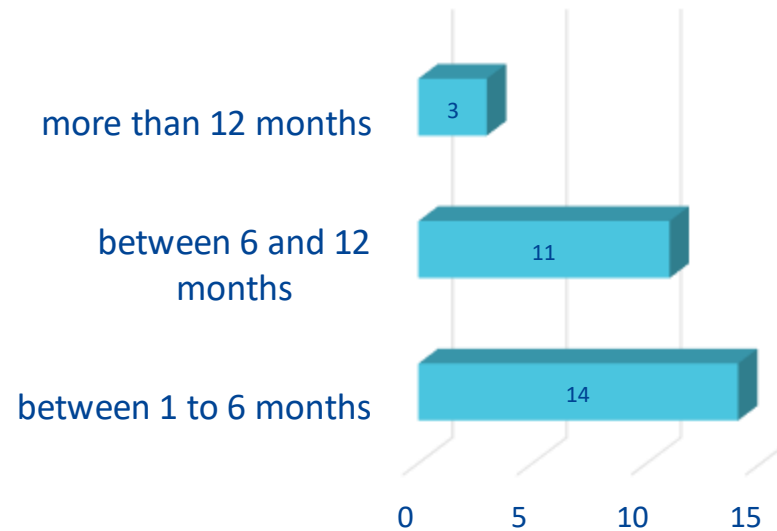
Duration of the extension



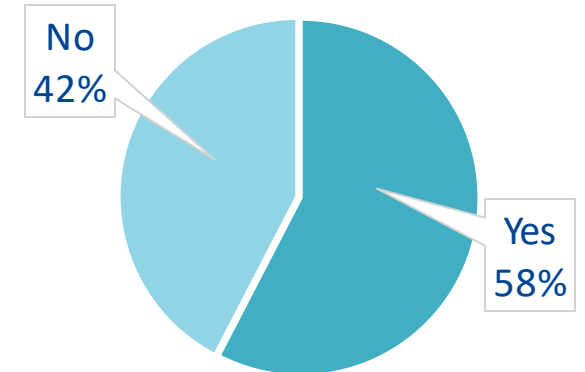
Has your project already been suspended due to Covid?



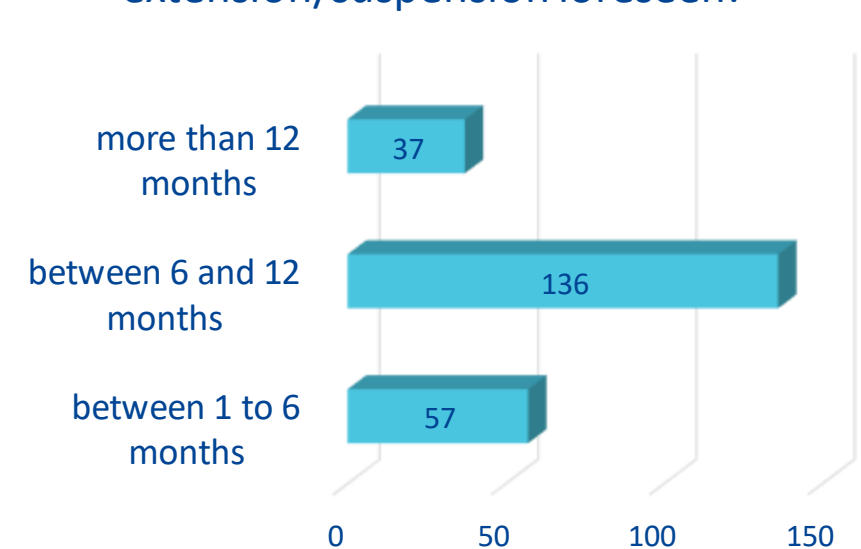
Duration of the suspension



Do you foresee an extension or suspension in the future?

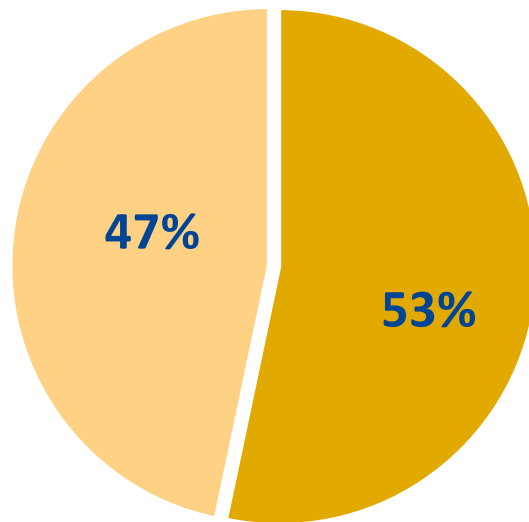


Duration of the extension/suspension foreseen:



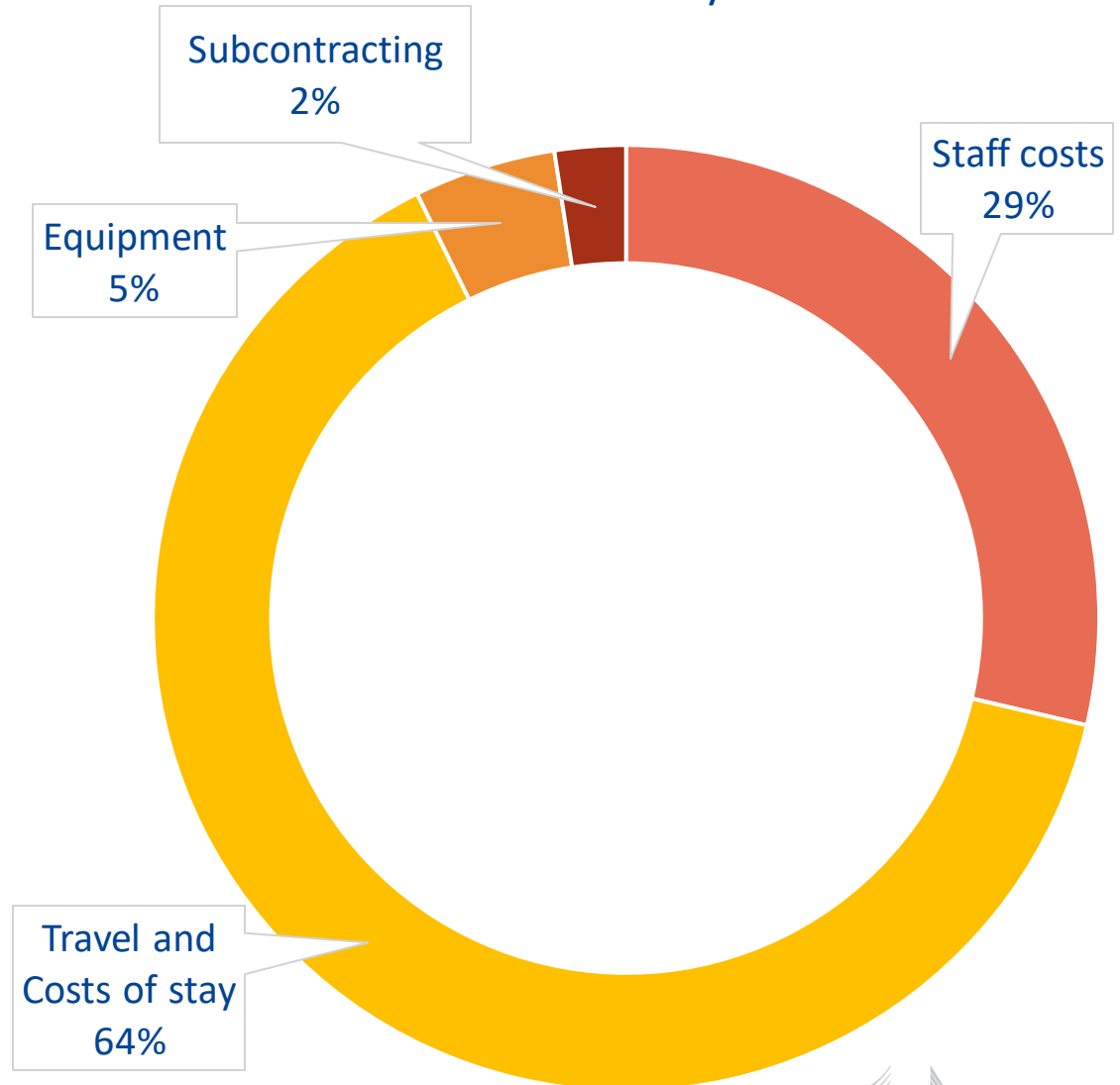
Modification of the budget

Have there been any financial modifications in the project budget or do you expect that they will be needed in the future?



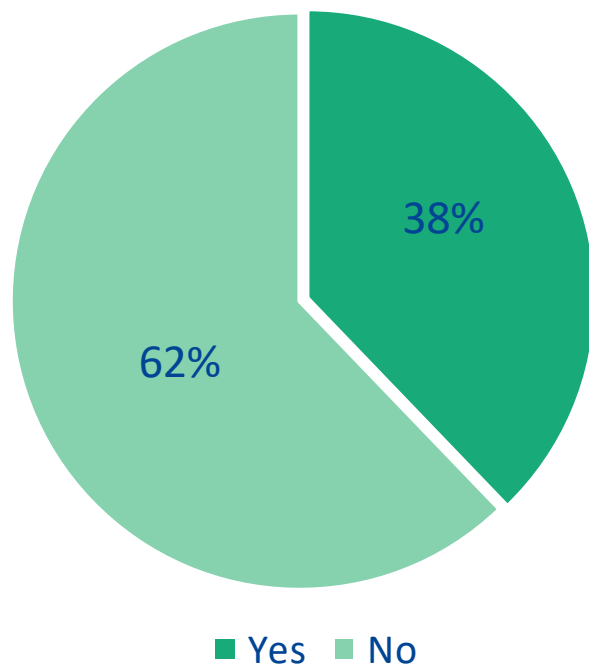
■ Yes ■ No

In which budget headings the budget modifications were/will be needed?

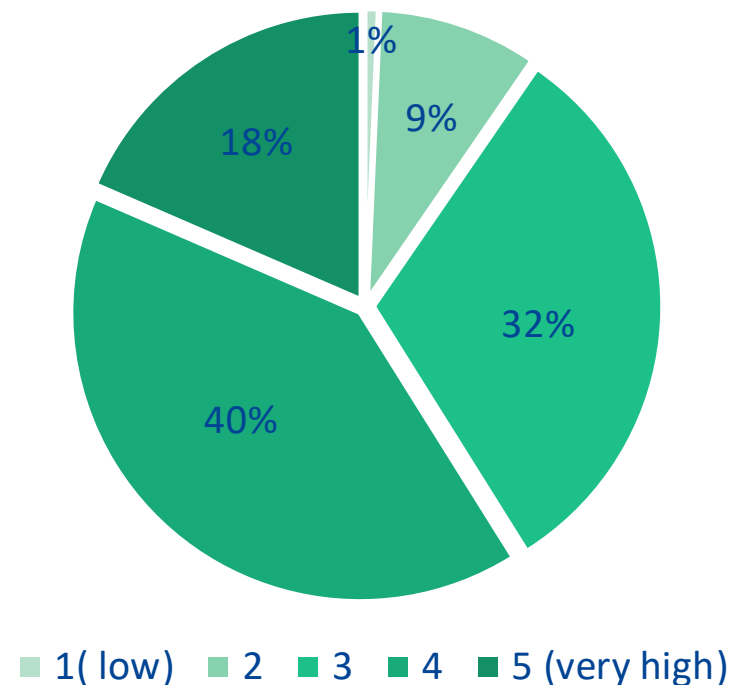


Exchange of best practices

Did you exchange 'best practice' with other CBHE projects?



To which extent have these exchanges been useful?



Only 38% of the participants exchanged good practices, but among them almost 60% considered these exchanges to be **very useful**.

Some examples of good practices

Some projects have discovered a new style of working in the future which consists of considering virtual activities that allow **more participation from different stakeholders**.

The project beneficiaries showed **flexibility in adopting alternative methods**, such as online tools and methodologies, or combining online and offline tools when applicable.

Some projects have developed **digital competences** and use IT as an effective tool to minimize the impact of COVID 19 .



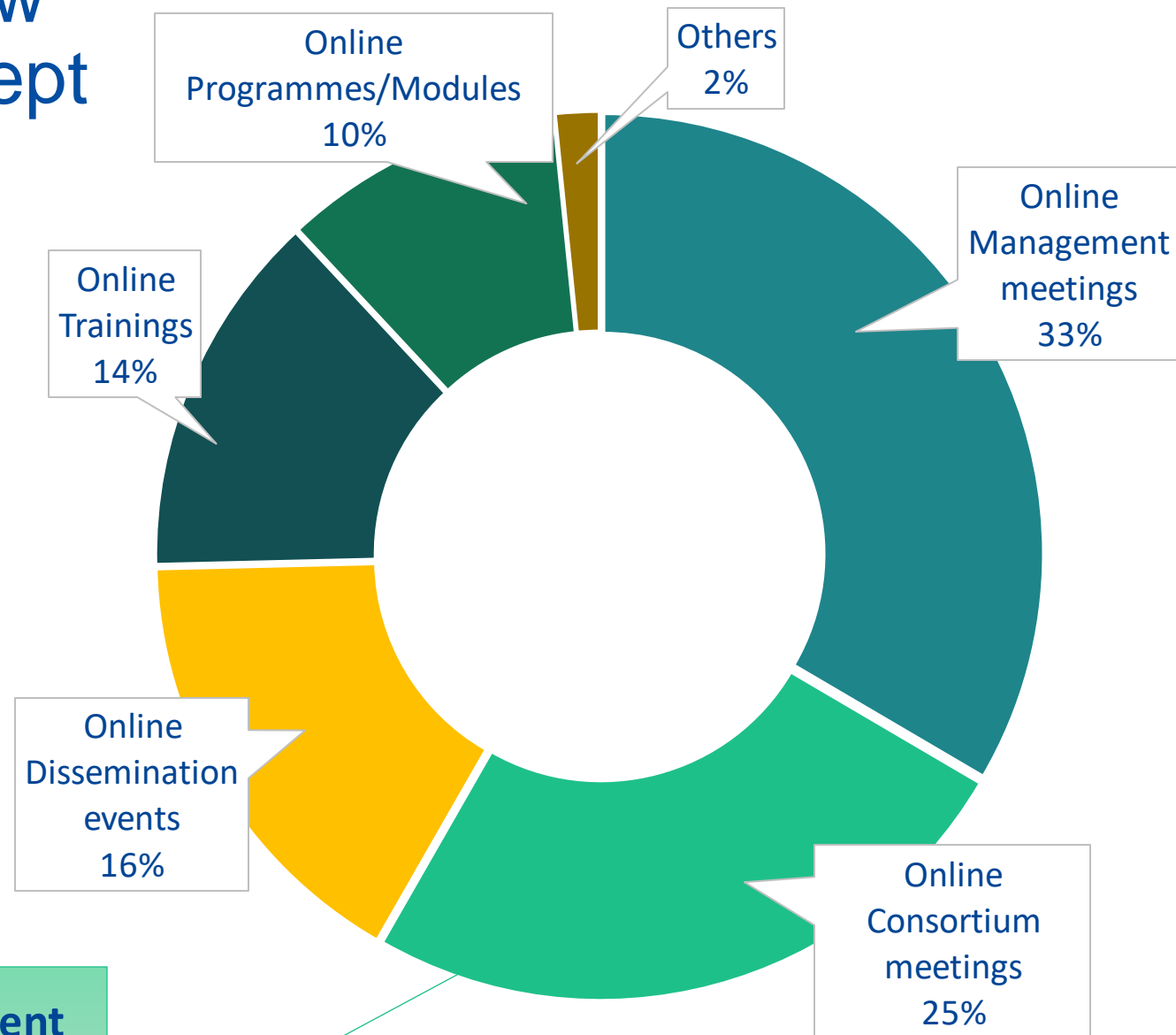
Positive aspects of the new modalities that could be kept in the future

"One of the good practices are the online consortium and management meetings, because it allows more frequent meetings, and to some extent the meetings are more efficient."

"More email-internal meetings means more communication among partners."

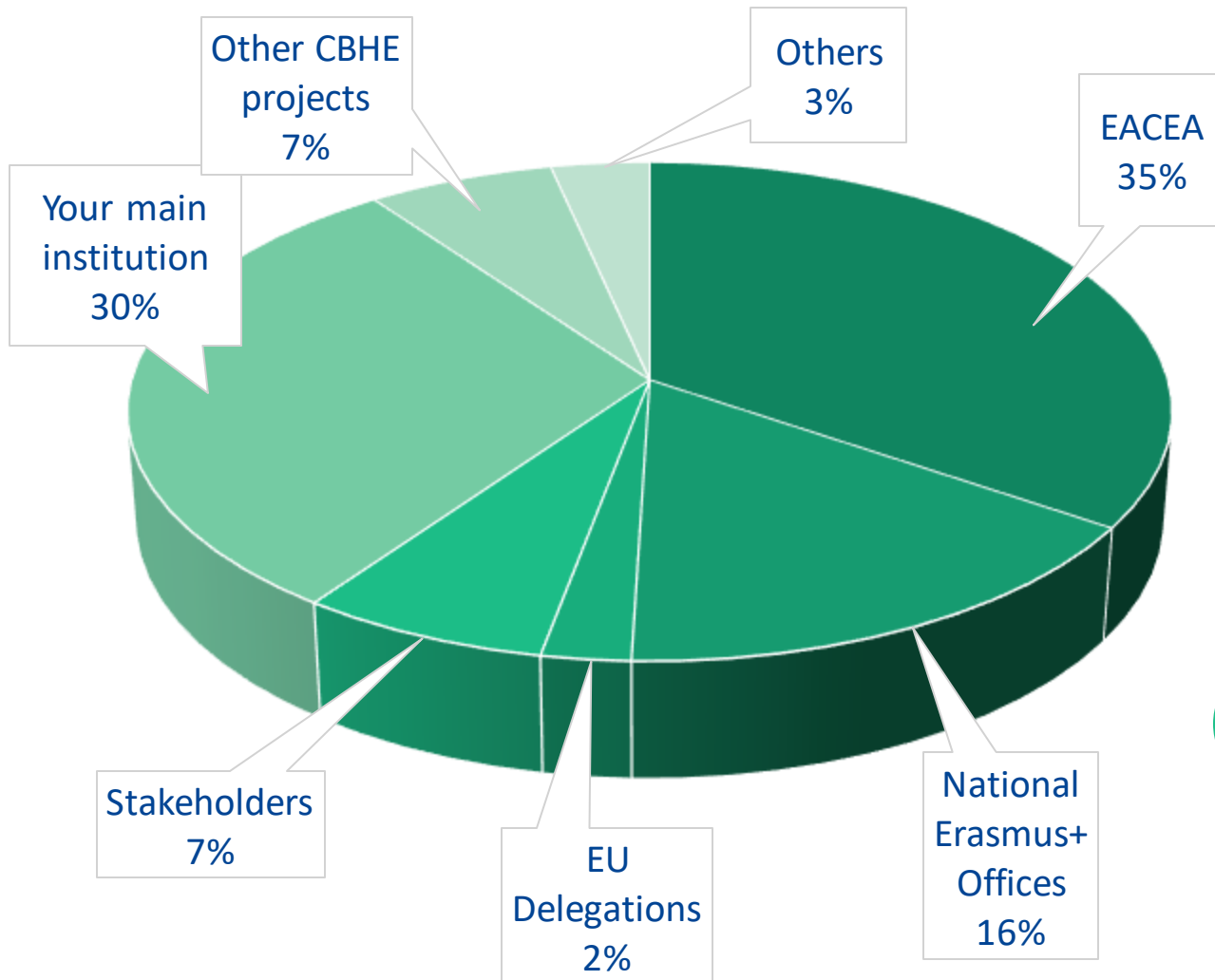
"More people can be reached in on-line trainings and study visits."

The majority wants to keep ONLINE the **Management meetings** (35%) and the **Consortium meetings** (25%).



Support

From which entities did you get the highest level of support?



“The representatives from the National Erasmus+ Office were always available and reachable for any request and support. Also the Project Officer from EACEA was attentive for any request and need from our side.”

“All partner institutions were very supportive in the management of the transition from face-to-face to online working modes.”

“Considering the situation we have to say that all the partnership supported the project more than the expected contribution.”

Main recommendations

A challenge providing an opportunity

- ❖ **Review your work plan** and **start** with the activities that can be done **on-line**
- ❖ **Do not make amendments on the budget** at this stage: use the 10% flexibility
- ❖ Ensure a strong **communication, information sharing and mutual trust** between the partners
- ❖ Develop better **digital tools**
- ❖ Show **flexibility** and have **contingent plans** to cope with uncertainty
- ❖ Decide which activities can be kept on-line **in the future** (or a combination of virtual/face-to-face)
- ❖ **Exchange experiences** and share **good practices** between projects
- ❖ Keep your **Project Officer and NEOs** informed of important changes

thank you

merci
obrigado
grazie
gracias
kiitos
спасиби
tack
köszönöm
хвала
danke
aciū
hvala vam
tak
teşekkür ederim
Dank u
bakka þér
σας ευχαριστώ
ddiolch 'ch
dėkuj
dziękuję
ארתן
Ďakujem
hvala
Takki
благодаря
Tapadh leibh
falemmnderit
спасибо
شكرا
trugarez
multumesc
tānan teid
дзякуй
Go raibh maith agaibh
Paldies
Vi благодарам
谢谢
धन्यवाद